

TECHNICAL MANUAL

ORGANIZATIONAL, DIRECT SUPPORT, AND GENERAL SUPPORT

**MAINTENANCE REPAIR PARTS AND SPECIAL TOOLS LISTS
(INCLUDING DEPOT MAINTENANCE REPAIR PARTS AND SPECIAL TOOLS)
FOR
MOBILE AUDIO VISUAL UNIT AN/MSQ-85
(NSN 5895-00-937-7100)**

HEADQUARTERS, DEPARTMENT OF THE ARMY

NOVEMBER 1978

TECHNICAL MANUAL
No. 11-5895-692-24P



HEADQUARTERS
DEPARTMENT OF THE ARMY
WASHINGTON, DC, 22 November 1978

**ORGANIZATIONAL, DIRECT SUPPORT, AND GENERAL SUPPORT
MAINTENANCE REPAIR PARTS AND SPECIAL TOOLS LISTS
(INCLUDING DEPOT MAINTENANCE REPAIR PARTS
AND SPECIAL TOOLS)
FOR**

**MOBILE AUDIO VISUAL UNIT AN/MSQ-85
(NSN 5895s0-37-7100)**

Current as of 26 June 1978

REPORTING OF ERRORS

You can improve this manual by recommending improvements using DA Form 2028-2 located in the back of the manual. Simply tear out the self-addressed form, fill it out as shown on the sample, fold it where shown, and drop it in the mail.

If there are no blank DA Forms 2028-2 in the back of your manual, use the standard DA Form 2028 (Recommended Changes to Publications and Blank Forms) and forward to the Commander, US Army Communications and Electronics Materiel Readiness Command, ATTN: DRSEL-ME-MQ, Fort Monmouth, NJ 07703.

In either case a reply will be furnished direct to you.

Table of Contents

	Page	Illus Figure
SECTION I. Introduction.....	1	
II. Repair Parts List.....	5	
Group 00 Mobile Audio Visual Unit AN/MSQ-85.....	5	1
01 Battery-Sonotone (NICAD 26480) (No Parts Authorized)		
02 Battery Charger (Electro Products LAB Model EF).....	7	2
03 Shelter S-318/G (MOD).....	11	3-6
04 Still Picture, Projector AP-9(1) (See TM 11-2332-20 and TM 11-2332-35 for Listing of Parts)		
05 Decontaminating Apparatus, Portable DS2, 1/2 Quart, ABC-M11 (See TM 3-4230-204-12&P for Listing of Parts)		
06 Recorder-Reproducer Set AN/UNH-10 (See TM 11-5874-200-20P and TM 11-5874-200-40P for Listing of Parts)		
07 Radio Receiver R-520/URR		
08 Projector, Motion Picture Sound AQ-4A(1) (See TM 11-6730-205-20P and TM 11-6730-20534P for Listing of Parts)		
09 Public Address Set AN/UIH-5 (See TM 11-5830-240-34P for Listing of Parts)		
10 Generator Set, Gas Engine 3KW, 60 Hz (See TM 56115271-14 and TM 5611-271-24P for parts)		
11 Engine, Gas GHP Models 4A032-1 and 4A032-11 (See TM 52805-203-24P for Listing of Parts)		
12 Camera Set, Still Picture KS-101A (Polaroid 250) (See TM 11-6720-239-12 and TM 11-6720-239-35 for Listing of Parts)		

***This manual supersedes TM 11-5895-692-24P, 22 June 1976.**

	Page	Illus Figure
Group 13	Heater, Space, Nonelectric UH-48 (See TM 5-4520-232-14 for Listing of Parts)	
14	Truck, 34-Ton M37B1 (See TM 9-2320-212-20P and TM 9-2320-212-34P for Listing of Parts)	
15	Telephone Set TA-312:PT (See TM 11-5805-201-20P and TM 11-5805-201-34P for Listing of Parts)	
16	Screen Projection BMI-10 (See SB 11-584)	
17	Screen Projection BM-22A (No Parts Authorized)	
18	Fire Extinguisher MIL81349 (No Parts Authorized)	
19	21	7
20	23	8
21	25	9
22	27	10
23	29	11
24	31	12
25	33	13
26	35	14
27	37	15
28	BM-22A Kit (No Parts Authorized)	
29	Typewriter (NSN 7430-00-254-4319) Mercer Robinson Co. Inc. (No Parts Authorized)	
SECTION III.	Special Tools List (Not Applicable)	
IV.	38	

**SECTION I
INTRODUCTION**

1. Scope

This manual lists spares and repair parts; special tools; special test, measurement, and diagnostic equipment (TMDE), and other special support equipment required for performance of organizational, direct support, and general support maintenance of the AN/MSQ-85. It authorizes the requisitioning and issue of spares and repair parts as indicated by the source and maintenance

2. General

This Repair Parts and Special Tools List is divided into the following sections:

a. Section II. Repair Parts List. A list of spares and repair parts authorized for use in the performance of maintenance. The list also includes parts which must be removed for replacement of the authorized parts. Parts lists are composed of functional groups in numeric sequence, with the parts in each group listed in figure and item number sequence. Bulk materials are listed in NSN sequence

b. Section III. Special Tools List. Not applicable

c. Section IV. National Stock Number and Part Number Index. A list, in National item identification number (NIIN) sequence, of all National stock numbers (NSN) appearing in the listings, followed by a list, in alphameric sequence, of all part numbers appearing in the listings. National stock numbers and part numbers are cross-referenced to each illustration figure and item number appearance repaired and identifies the lowest maintenance level with the capability to perform complete

3. Explanation of Columns

a. Illustration. This column is divided as follows:

(1) *Figure number.* Indicates the figure number of the illustration on which the item is shown

(2) *Item number.* The number used to identify item called out in the illustration

b. Source, Maintenance, and Recoverability (SMR) Codes

(1) *Source code.* Source codes indicate the manner of acquiring support items for maintenance, repair, or overhaul of end items. Source codes are entered in the first and second position of the Uniform SMR Code format as follows:

<i>Code</i>	<i>Definition</i>
PA --	Nonreparable item. When unserviceable, or known usage
PD -	Support item, excluding support equipment, procured for initial issue or outfitting and stocked only for subsequent or

<i>Code</i>	<i>Definition</i>
	additional initial issues or outfittings. Not subject to automatic replenishment.
XD -	A support item that is not stocked. When required, item will be procured through normal supply channels.

NOTE

Cannibalization or salvage may be used as a source of supply for any items source coded above except those coded XA and aircraft support items as restricted by AR 700-42.

(2) *Maintenance code.* Maintenance codes are assigned to indicate the levels of maintenance authorized to USE and REPAIR support items. The maintenance codes are entered in the third and fourth positions of the Uniform SMR Code format as follows:

(a) The maintenance code entered in the third position will indicate the lowest maintenance level authorized to remove, replace, and use the support item. The maintenance code entered in the third position will indicate one of the following levels of maintenance:

<i>Code</i>	<i>Application/Explanation</i>
0 -	Support item is removed, replaced, used at the organizational level.
F -	Support item is removed, replaced, used at the direct support level.

(b) The maintenance code entered in the fourth position indicates whether the item is to be repair (i.e., all authorized maintenance functions). This position will contain one of the following maintenance codes:

<i>Code</i>	<i>Application/Explanation</i>
F -	The lowest maintenance level capable of complete repair of the support item is the direct support level.
Z-	Nonreparable. No repair is authorized.

(3) *Recoverability code.* Recoverability codes are assigned to support items to indicate the disposition action on unserviceable items. The recoverability code is entered in the fifth position of the Uniform SMR Code format as follows:

<i>Recoverability codes</i>	<i>Definition</i>
Z -	Nonreparable item. When unserviceable, condemn and dispose at the level indicated in position 3.
F -	Reparable item. When uneconomically repairable, condemn and dispose at the

Recoverability
code

Definition

direct support level.

D -Reparable item. When beyond lower level repair capability, return to depot. Condemnation and disposal not authorized repair capability, return to depot. Condemnation and disposal not authorized below depot level.

c. *National Stock Number.* Indicates the National stock number assigned to the item and will be used for requisitioning purposes.

d. *Part Number.* Indicates the primary number used by the manufacturer (individual, company firm, corporation, or Government activity), which controls the design and characteristics of the item by means of its engineering drawings, specifications, identify an item or range of items.

NOTE

When a stock-numbered item is requisitioned, the repair part received may have a different part number than the part being replaced.

e. *Federal Supply Code for Manufacturer (FSCM).* The FSCM is a 5-digit numeric code listed in SB 708-42 which is used to identify the manufacturer, distributor, or Government agency etc.

f. *Description.* Indicates the Federal item name and, if required, a minimum description to identify

g. *Unit of Measure (U/M).* Indicates the standard of the basic quantity of the listed item as used in the item. performing the actual maintenance function. This measure is expressed by a two-character alphabetical abbreviation (e.g., ea., in, pr, etc.). When the unit of measure differs from the unit of issue, the lowest unit of issue that will satisfy the required units of measure will be requisitioned.

h. *Quantity Incorporated in Unit.* Indicates the quantity of the item used in the breakout shown on the illustration figure, which is prepared for a functional group, subfunctional group, or an assembly.

4. Special Information

The following publications pertain to the AN/MSQ-85 and its components:

SB 11-584, Photographic Projection Screens BM-10A and B-23

TM 3-4230-204-12&P, Decontaminating Apparatus, Portable, DS, 1½ Quart, ABC-M11(NSN 4320-00-720-1618).

TM 5-687, Repair and Utilities: Fire Protection Equipment and Appliances: Inspections, Operations, and Preventative Maintenance.

05-203-14, Engine, Gasoline, 6 HP, Military Standard Models, DOD 4A032-1, NSN 2805-00-0483; DOD Model 4A032-2, NSN 2805-00-068-7512.

TM 5-2805-2Equipment and Appliances; Inspections, Opera-03-24P, Engine, Gasoline, 6 HP, Military, and Preventive Maintenance. Standard Models; DOD Model 4A032-1 (NSN 2805-00-776-0483) and DOD Model 4A032-2 (NSN 2805-00-068-7512).

TM5-4520-232-14, Heater, Space, Multi-Fuel W/Blower; 15, 000 BTU/Hour, 120V, 60 Hertz, 3. 5 Amp (Hunter Model UH-48, Type 1) FSN 4520-709-9222.

TM 5-6115-271-14, Operator/Crew, Organizational, Intermediate (Field) (Direct and General Support) and Depot Maintenance Manual: Generator Set, Gasoline Engine Driven, Skid Mounted, Tubular Frame, 3 KW, 3 Phase, AC, 120/208 and 120/240 V, 28V DC (Less Engine), DOD Model MEP-016A, 60 Hertz, NSN 6115-00017-8237; DOD Model MEP-021A, 400 Hertz, NSN 6115-00-017-8237; DOD Model MEP-021A, 400 Hertz, NSN 6115-00-017-8238 and DOD Model MEP-026A, DC Hertz, NSN 6115-00-0178239.

TM 5-6115-271-24P, Organizational, Intermediate (Field) Direct Support, General Support, and Depot Maintenance Repair Parts and Special Tools List: Generator Set, Gasoline Engine Driven, Skid Mounted, Tubular Frame, 3 KW, 3 Phase, AC, 120/208 and 120/240 V, 28V DC (Less Engine), DOD Model MEP-016A, 60 Hertz, NSN 6115-00-017-8237; MEP-021A, 400 Hertz, NSN 6115-00-017-8238; MEP-026A, 28V DC, NSN 6115-00-017-8239.

TM9-2320-212-20P, Truck, Ambulance; 3/4-Ton, 4x4, M43 WO/W (2310-835-8516); M43 W/W (358617); M43B1 WO/W (2310-542-4634); . Truck Cargo: 3/4-Ton, 4x4, M37 WO/W (2320-8358322); M37 W/W (2320-8358323); M37B1 WO/W (2320-542-4636); M37B1 W/W (2320-542-4632); Truck, Maintenance: 3/4-Ton, 4x4, M201 WO/W (2320-835-8583), W/W (2320-392-3703), M201B1 W/W (2320-630-6801).

TM 9-2320-212-34P, Truck, Cargo: 3/4-Ton, 4x4, M37 WO/W (2320-835-8322), M37 W/W (2320-835-8323); M37B1 WO/W (2320-542-4636); M37B1 W/W (2320-542-4632); Truck, Ambulance: 3/4-Ton, 4x4, M43 WO/W (2310-835-8516); M43 W/W (2320-8358617); M43B1 WO/W (2310-542-4634); Truck, Maintenance: 3/4-Ton, 4x4, M201 WO/W (2310835-8583); M201 W/W (2320-392-3703); M201B1 W/W (2320-630-6801).

TM 11-2332-20, Projector PH-222-C and Projector, Still Picture AP-9(1).

- TM 11-2332-35, Projector PH-222-C and Projector, Still Picture AP-9(1)
- TM 11-5410-212-15P, Shelter, Electrical Equipment S-318/G
- TM 11-5805-201-12, Telephone Set TA-312/PT (NSN 5805-00-543-0012)
- TM 11-5805-201-20P, Telephone Set TA-312/PT (NSN 5805-00-543-0012)
- TM 11-5805-201-34P, Telephone Set TA-312/PT (NSN 5805-00-543-0012)
- TM 11-5805-201-35, Telephone Set TA-312/PT
- TM 11-5830-240-15, Public Address Set AN/UIH-5
- TM 11-5805-201-34Ppublic Address Set AN/UIH-5. (FSN 5830-082-4120).
- TM 11-5874-200-20P, Recorder-Reproducer Set, Sound AN/UNH-10 (NSN 5835-00-082-3842)
- TM 11-5874-200-40P, Recorder-Reproducer Set, Sound AN/UNH-10 (NSN 5835-00-082-3842)
- TM 11-6720-239-12, Camera Set, Still Picture KS-101A.
- TM 116730-205-20P, Projectors, Still Picture AP-4(1), AP-4(2), and AP-4(3), FSN 6730-200-4398
- TM 11-6730-205-34P, Projectors, Still Picture AP-4(1), AP-4(2), and AP-4(3) (FSN 6730-200-4398) TM 11-6730-210-10, Projection Set, Motion Picture, Sound AS-7A
- TM 11-6730-210-20, Projection Set, Motion Picture, Sound AS-7A
- TM 11-6730-210-35, Projection Set, Motion Picture, Sound AS-7A

5. How to Locate Repair Parts

a. When National stock number or part number is unknown.

(1) *First.* Using the table of contents, determine the functional group within which the item belongs. This is necessary since illustrations are prepared for functional groups and listings are divided into the same groups.

(2) *Second.* functional group to which the item belongs.

(3) *Third.* Identify the item on the illustration and note the illustration figure and item number of the item.

(4) *Fourth.* Using the Repair Parts Listing, find the figure number and item number noted on the illustration.

b. When National stock number or part Number is known.

(1) *First.* Using the Index of National Stock Numbers and Part Numbers, find the pertinent National stock number or part number. This index is in NIIN sequence followed by a list of part numbers in alphameric sequence, cross-referenced to the illustration figure number and item number.

(2) *Second.* After finding the figure and item number, locate the figure and item number in the repair parts list.

6. Abbreviations

Not applicable.

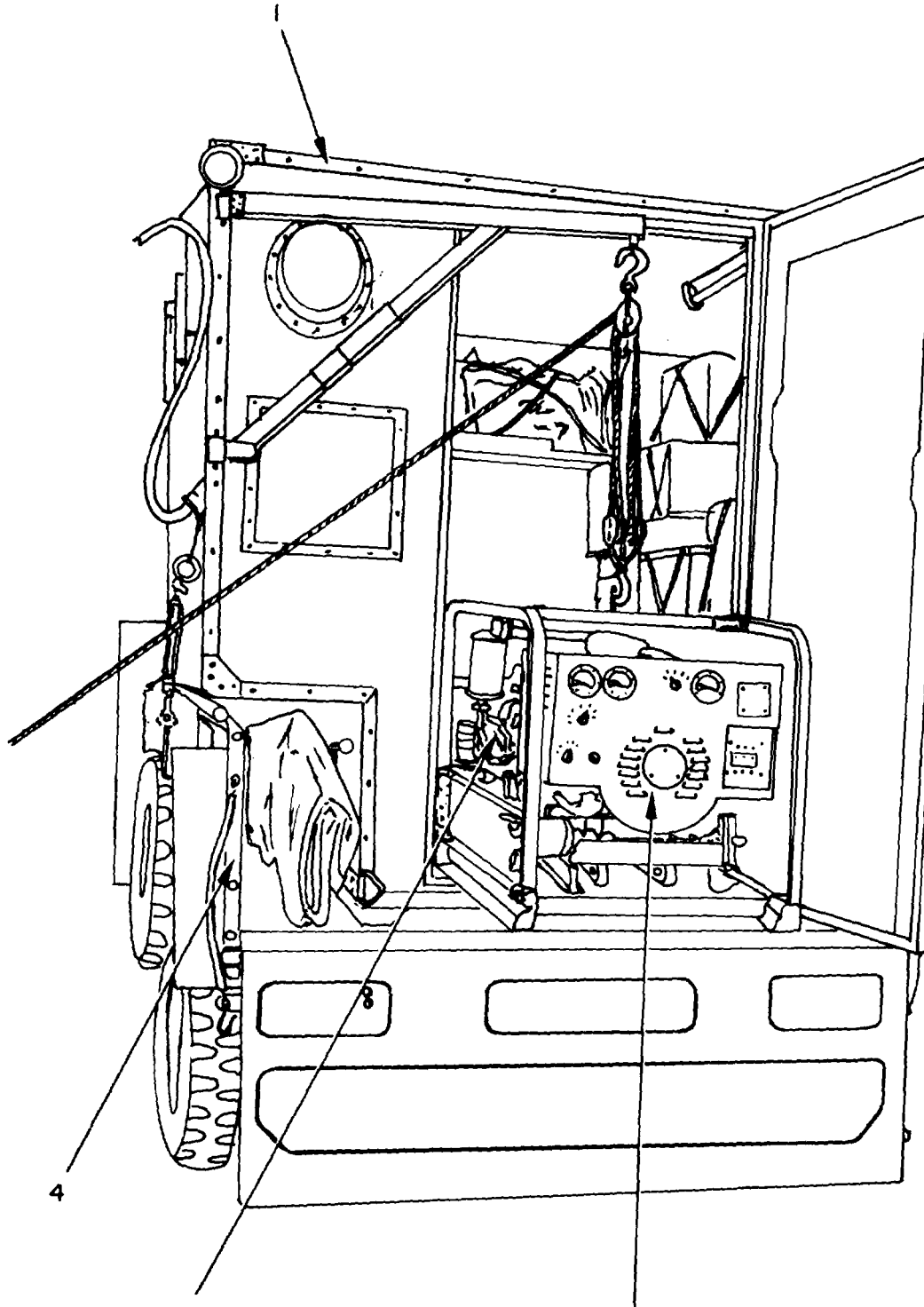
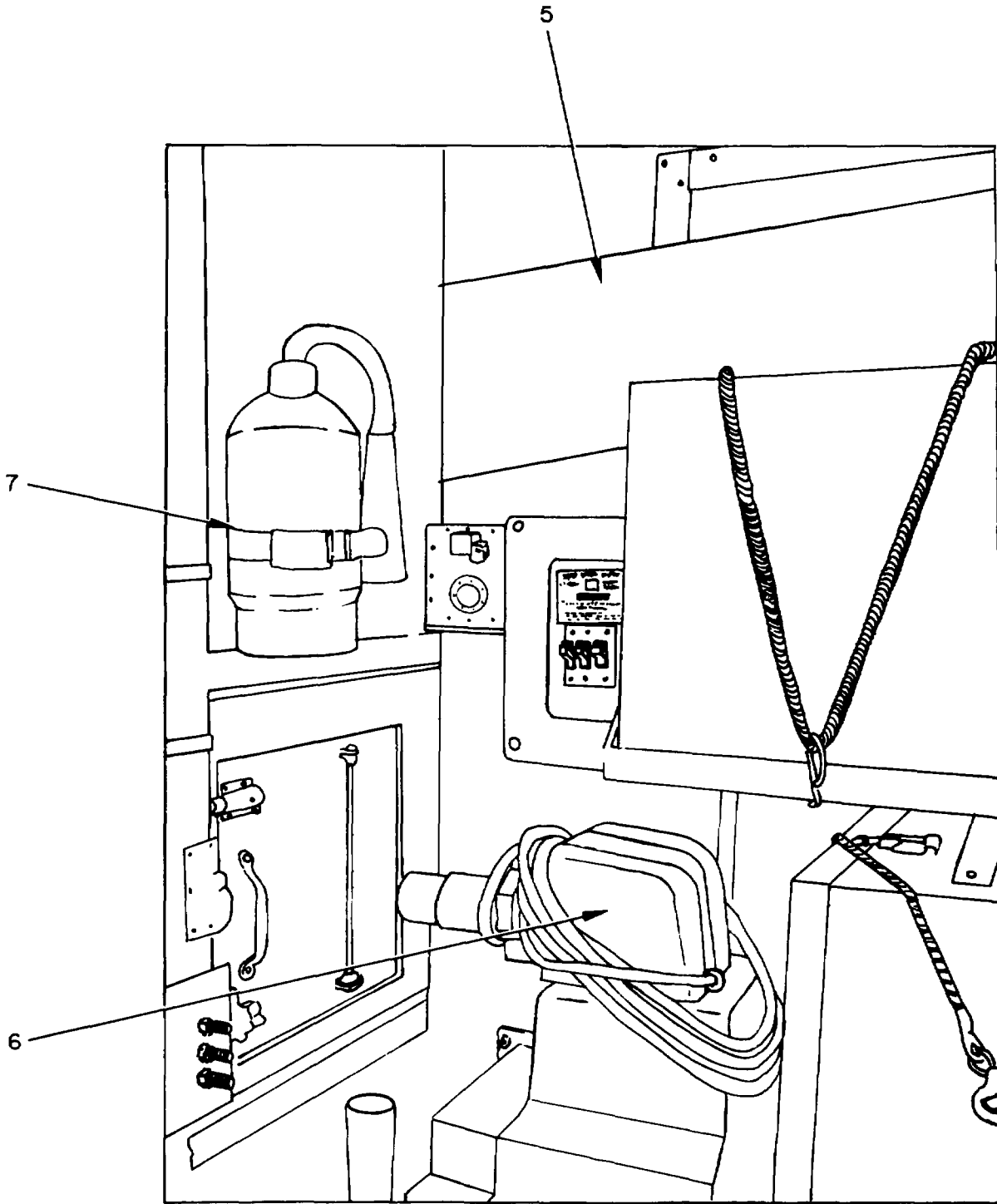


Figure 1. Mobile Audio Visual Unit ANIMSQ-85
(Sheet 1 of 5).



ELOKR002

Figure 1. Mobile Audio Visual Unit ANhVSQ-85
(Sheet 2 of 5).

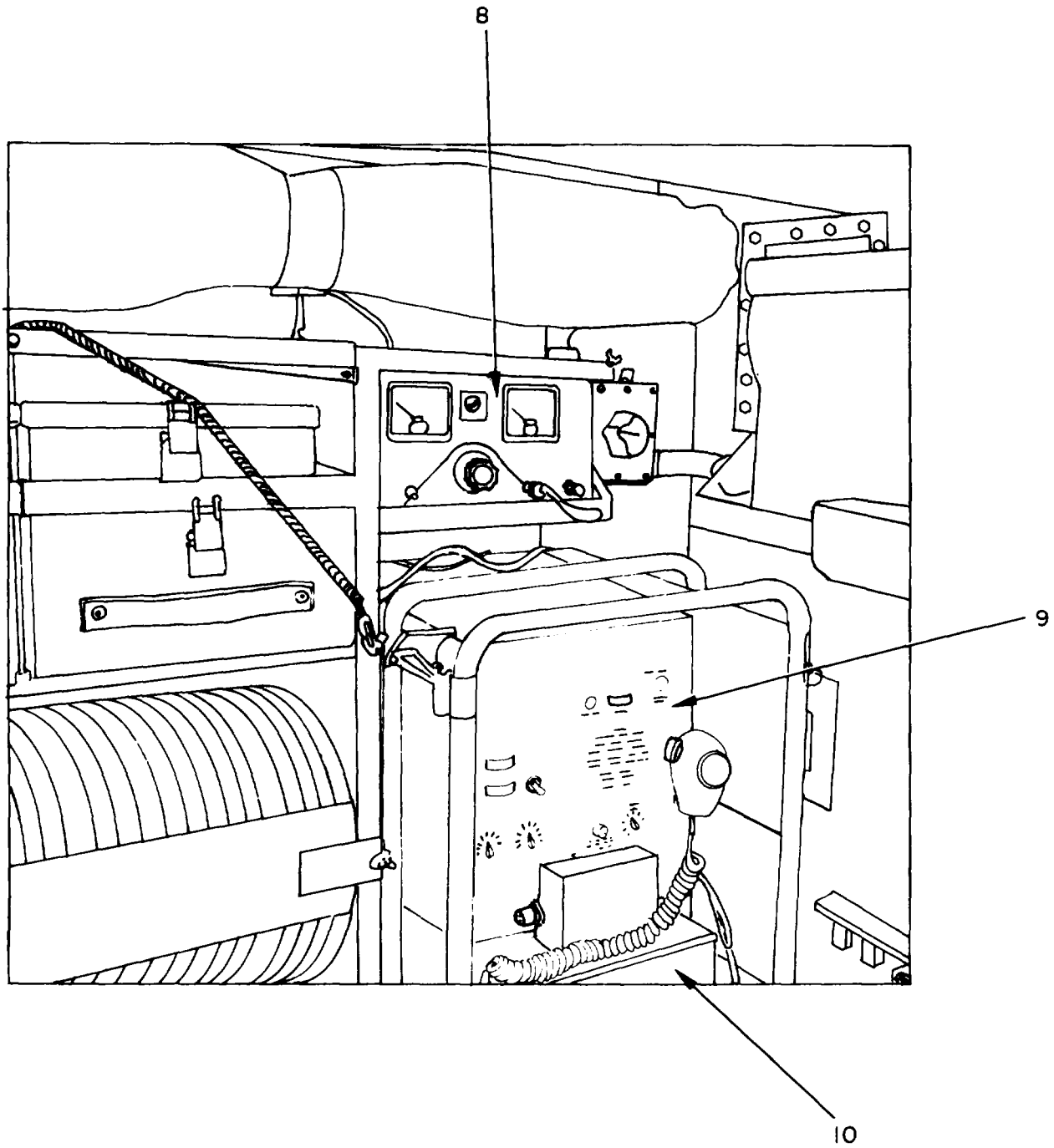


Figure 1. Mobile Audio Visual Unit ANIMSQ-85
(Sheet 3 of 5).

E L O K R O O 3

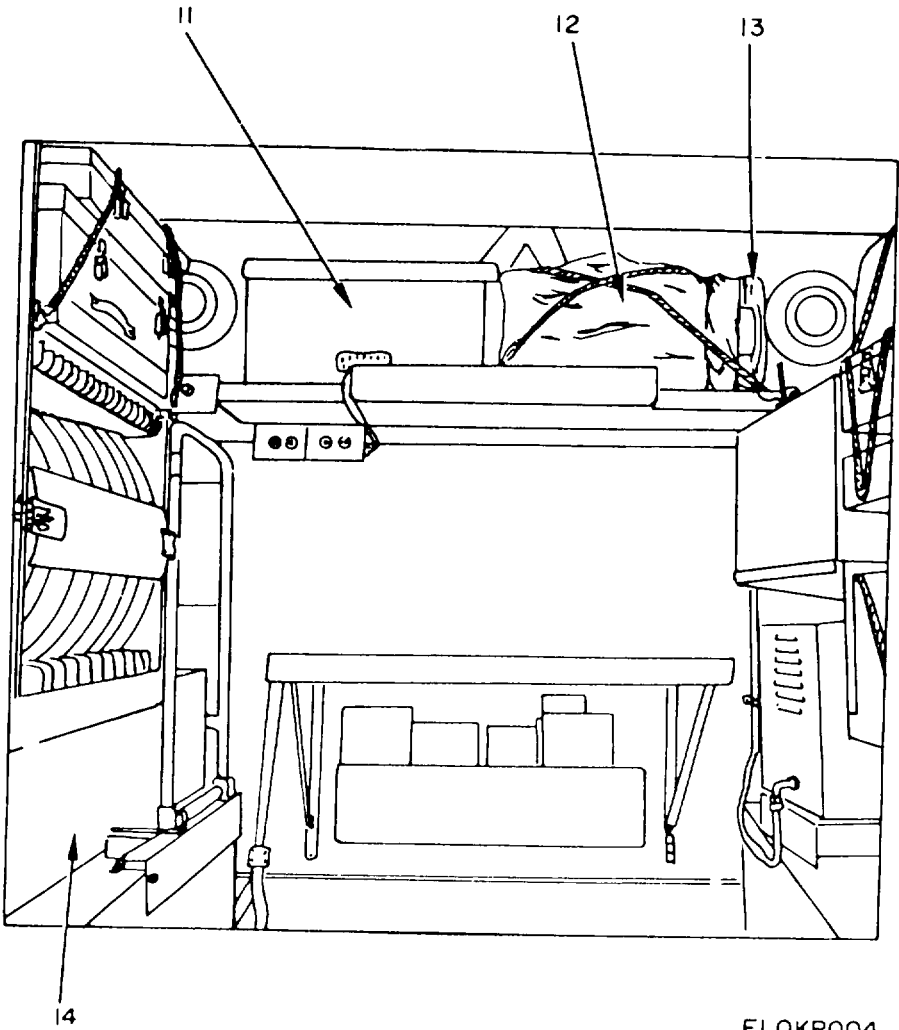
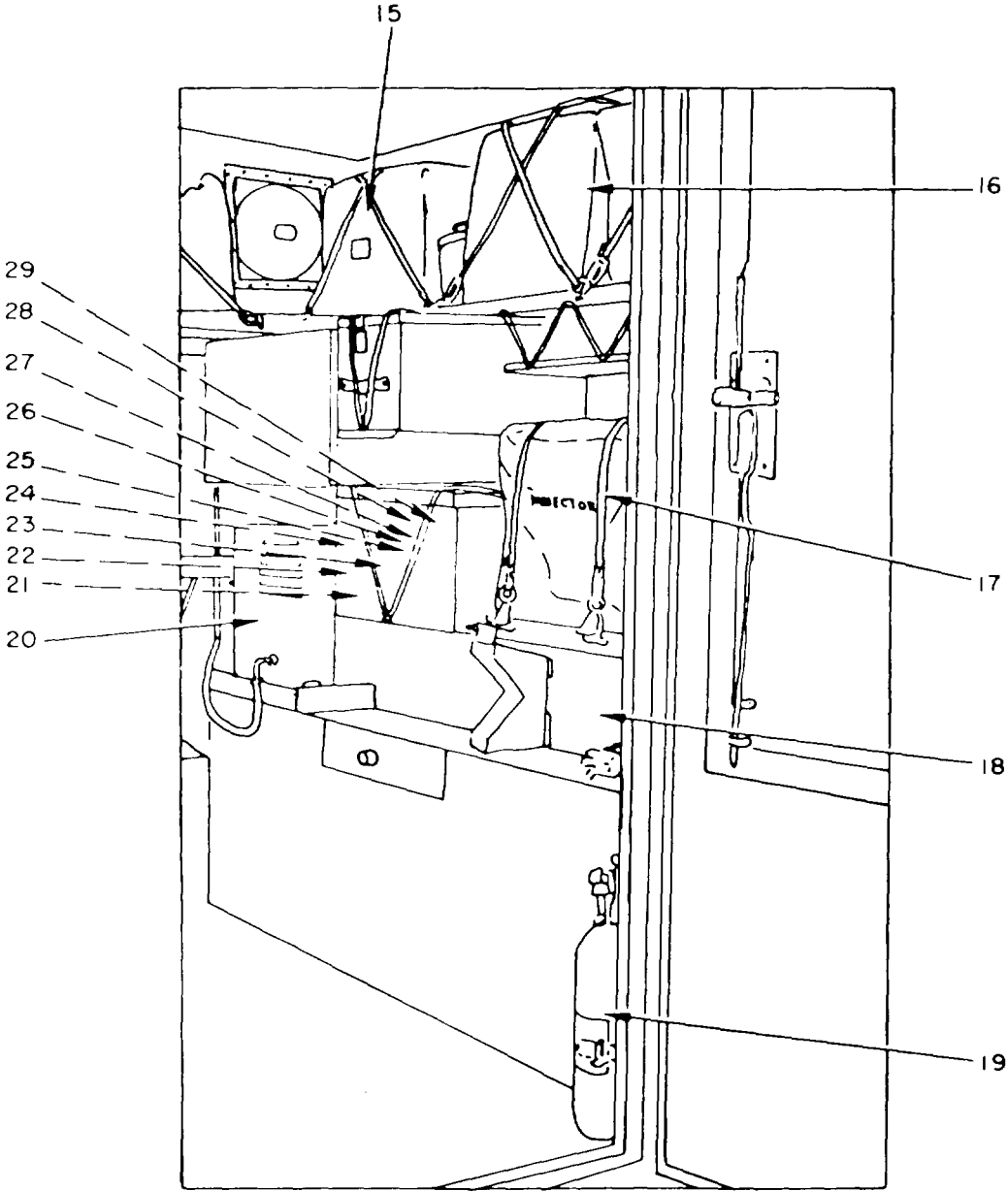


Figure 1. Mobile Audio Visual Unit ANIMSQ-85
(Sheet 4 of 5).



ELOKR005

Figure 1. Mobile Audio Visual Unit AN/MSQ-85
(Sheet 5 of 5).

SECTION II

TM11-5895-692-24P

(1) ILLUSTRATION		(2)	(3)	(4)	(5)	(6)	(7)	(8)
(a) FIG NO.	(b) ITEM NO.	SMR CODE	NATIONAL STOCK NUMBER	PART NUMBER	FSCM	DESCRIPTION USABLE ON CODE	U/M	QTY INC IN UNIT
						GROUP 00 MOBILE AUDIO VISUAL UNIT AN/NSQ-85		
1	1	PDDFFD	5410-00-763-2339	S318G	80058	SHELTER.....	EA	1
1	2	PDDFFD	6115-00-017-8237	MEP-016A	30954	GENERATOR SET, GAS	EA	1
1	3	PDDFFD	2805-00-776-0483	4A032-1	97403	ENGINE, GAS	EA	1
1	4	PDDFFD	2320-00-542-4636	M37B1	80058	TRUCK 3-4TON.....	EA	1
1	5	PDDFFD	6730-00-577-4813	BM10A	96906	SCREEN PROJECTION.....	EA	1
1	6	XDDFFD		AP9-1	80058	STILL PICTUR.....	EA	1
1	7	XDDFFD		DS21- 2QUART, AB CM11		DECONTAMINATING.....	EA	1
1	8	XDOFF		MODELEF	81692	BATTERY CHARGER	EA,	1
1	9	PDDFFD	5830-00-082-4126	ANU1H5	80058	PUBLIC ADDRESS SET	EA	1
1	10	PDDFF	6140-00-832-5731	26480	55933	BATTERY SONOTONE.....	EA	1
1	11	PDDFFD	7730-00-503-1403	R52OURR	80058	RADIO RECEIVER.....	EA	1
1	12	PDDFFD	6720-00-935-3818	2522A	47904	CAMERA SET, STILL.....	EA	1
1	13	PDDFFD	5805-00-543-0012	TA312PT	80058	TELEPHONE SET.....	EA	1
1	14	PDDFFD	6730-00-933-4871	822A	06400	SCREEN PROJECTION.....	EA	1
1	15	PDDFFD	5835-00-082-3842	ANUNH10	80058	RECORDER REPRODUCER.....	EA	1
1	16	PDDFF	7430-00-254-4319	5	50456	TYPEWRITER	EA	1
1	17	PDDFFD	6713-00-889-3393	067504	06650	PROJECTOR, . MOTION	EA	1
1	18	PDDFF	7520-00-761-2151	MILS43483	81349	KIT	EA	1
1	19	PAFDD	4210-00-270-4512	MILTYPE1CLIFF5	81349	FIRE EXTINGUISHER.....	EA	1
1	20	XDDFFD		UH48	80058	HEATER, SPACE	EA	1
1	21	PAFFF	5995-00-779-3724	SCC622029	80063	CABLE ASSEMBL.....	EA	1
1	22	PAFFF	5995-00-879-3738	SCC622028	80063	CABLE ASSEMBL.....	EA	1
1	23	PAFFF	5995-00-879-3753	SCC622026	80063	CABLE ASSEMBL.....	EA	1
1	24	PAFFF	5995-00-879-3752	SCC622025	80063	CABLE ASSEMBL.....	EA	1
1	25	XDDFF		SCC622031	80063	CABLE ASSEMBL.....	EA	1
1	26	PAFFF	5995-00-879-3715	SCC622024	80063	CABLE ASSEMBL.....	EA	1
1	27	XDDFF		SCC622030	80063	CABLE ASSEMBL.....	EA	1
1	28	PAFFF	5995-00-879-3762	SCC622027	80063	CORD, EXTENSION	EA	1
1	29	PAFFZ	6150-00-879-6430	16-001	81692	CORD, LINE	EA	1
					5			

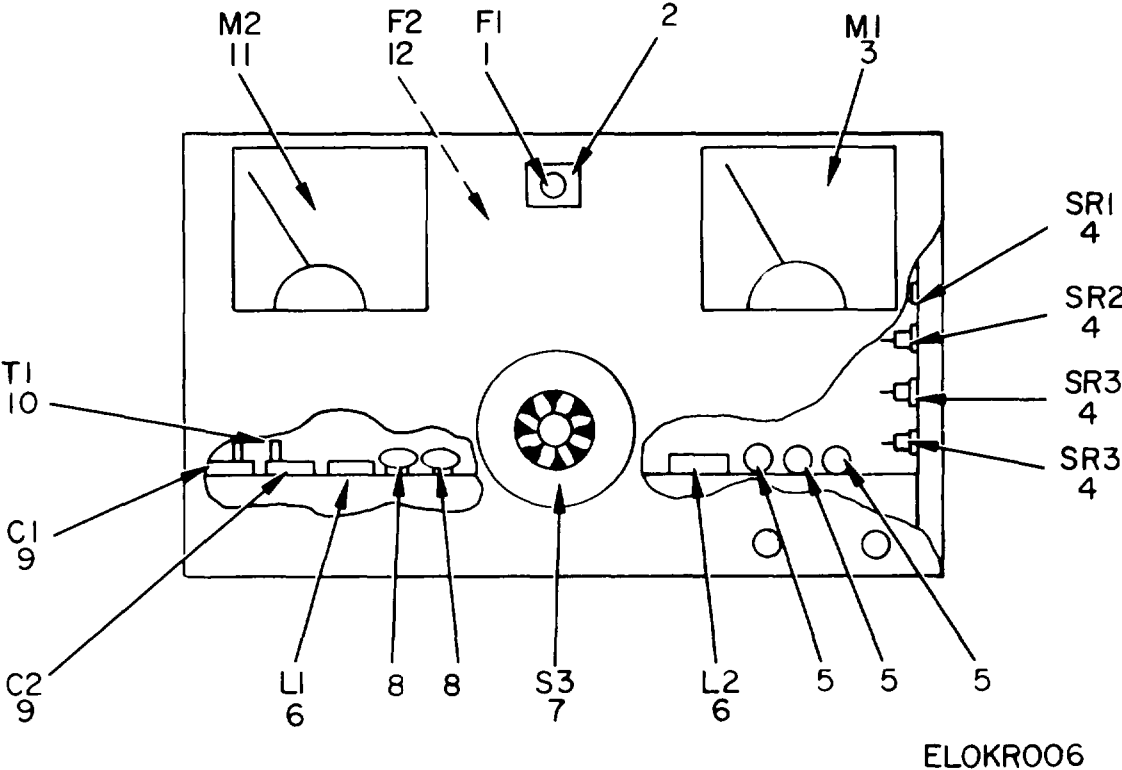
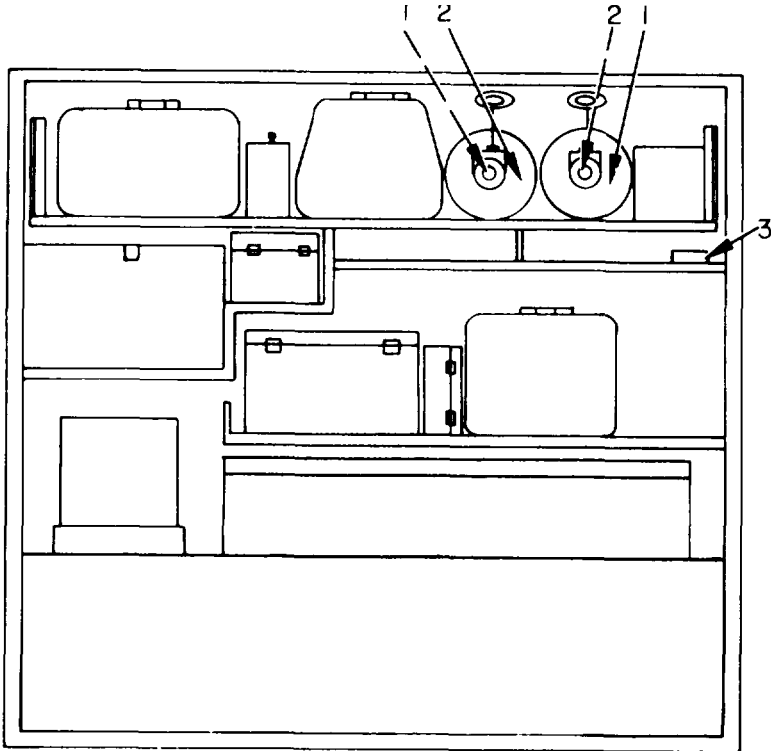


Figure 2. Battery Charger (Electro Products LAB Model EF).

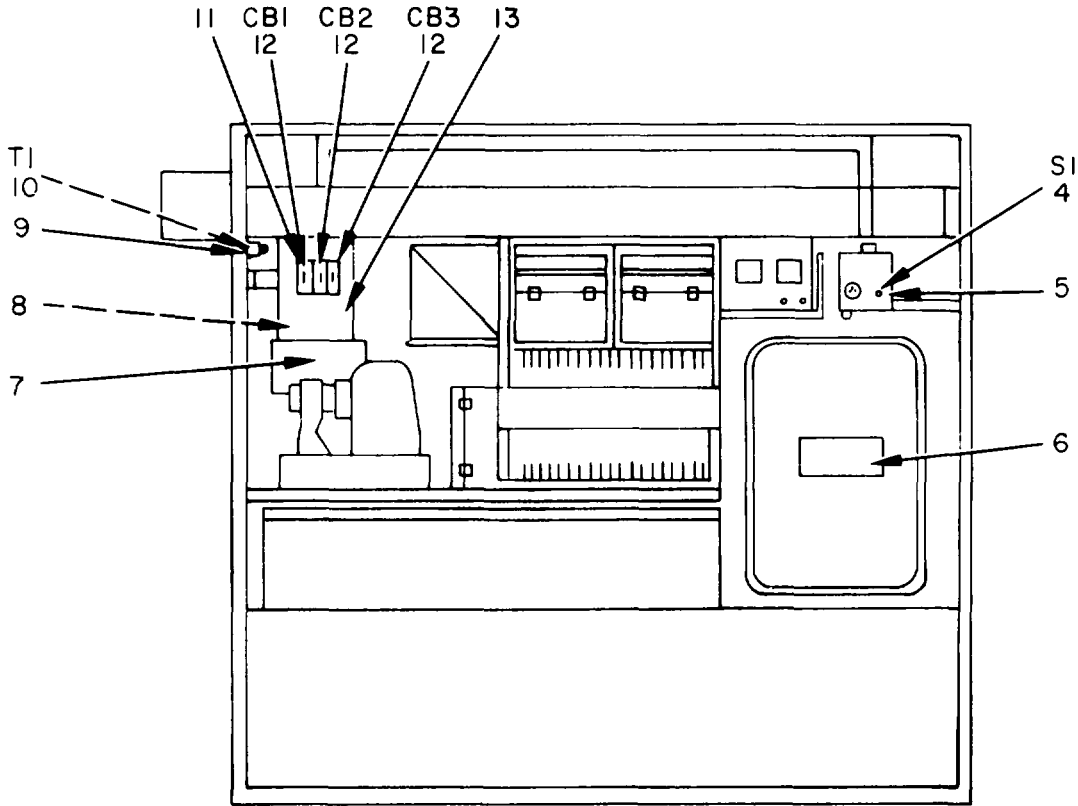
SECTION II

TM11-5895-692-24P

(1) ILLUSTRATION		(2)	(3)	(4)	(5)	(6)	(7)	(8)
(a) FIG NO.	(b) ITEM NO.	SMR CODE	NATIONAL STOCK NUMBER	PART NUMBER	FSCM	DESCRIPTION USABLE ON CODE	U/M	QTY INC IN UNIT
						GROUP 02 BATTERY CHARGER (ELECTRO PRODUCTS LAB MODEL EF		
2	1	PADZZ	5920-00-010-6652	3AMP3AG	73915	FUSE, CARTRIDGE	EA	1
2	2	PAFZZ	5920-00-792-3830	342001	75915	FUSEHOLDER	EA	1
2	3	PAFZZ	6625-00-933-7763	2-001	81692	AMMETER.....	EA	1
2	4	XDFZZ		10007	81692	RECTIFIER.....	EA	4
2	5	PAFZZ	5910-00-584-2569	47P8	05571	CAPACITOR, FIXED	EA	3
2	6	PAFZZ	5950-00-933-7881	05-024	81692	CHOKE, FILTER	EA	2
2	7	XDFZZ		51-002	81692	SWITCH, ROTARY	EA	1
2	8	XDFZZ		KGNT3010	09023	CAPACITOR, FIXED	EA	2
2	9	PAFZZ	5910-00-933-7970	20-007	81692	CAPACITOR, FIXED	EA	2
2	10	PAFZZ	5950-00-933-7880	02-002	81692	TRANSFORMER.....	EA	1
2	11	PAFZZ	6625-00-933-7762	25-001	81692	VOLTMETER.....	EA	1
2	12	XDOZZ		31101	15915	FUSE, CARTRIDGE	EA	1



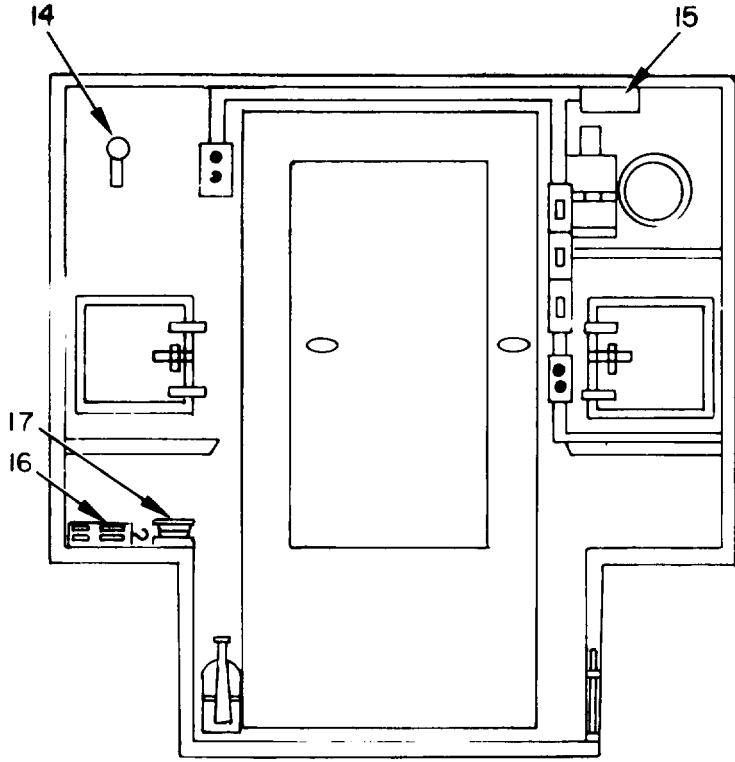
A. CURBSIDE WALL EQUIPMENT



BOADSIDE WALL EQUIPMENT

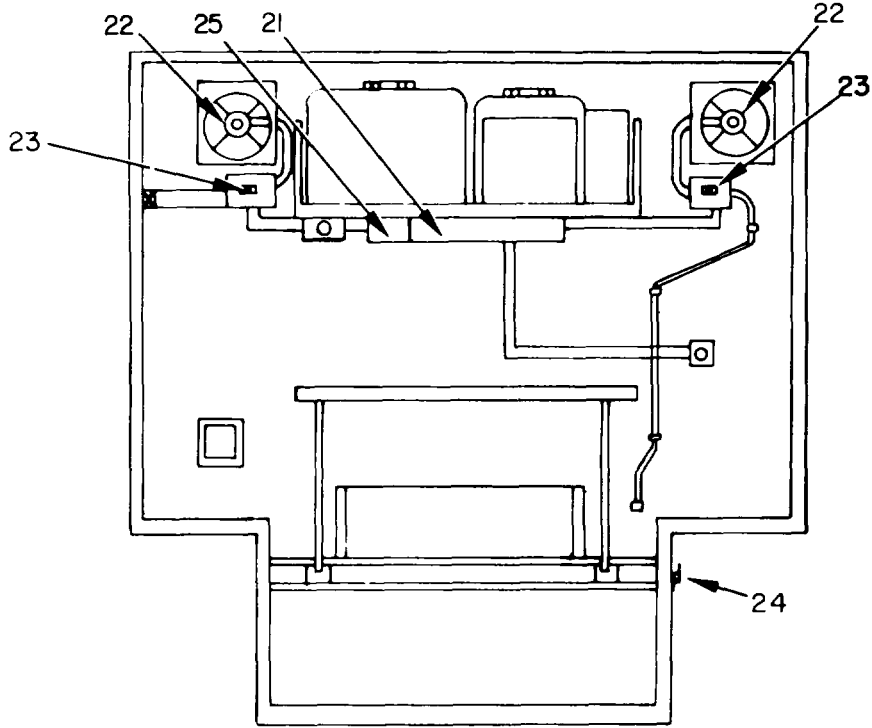
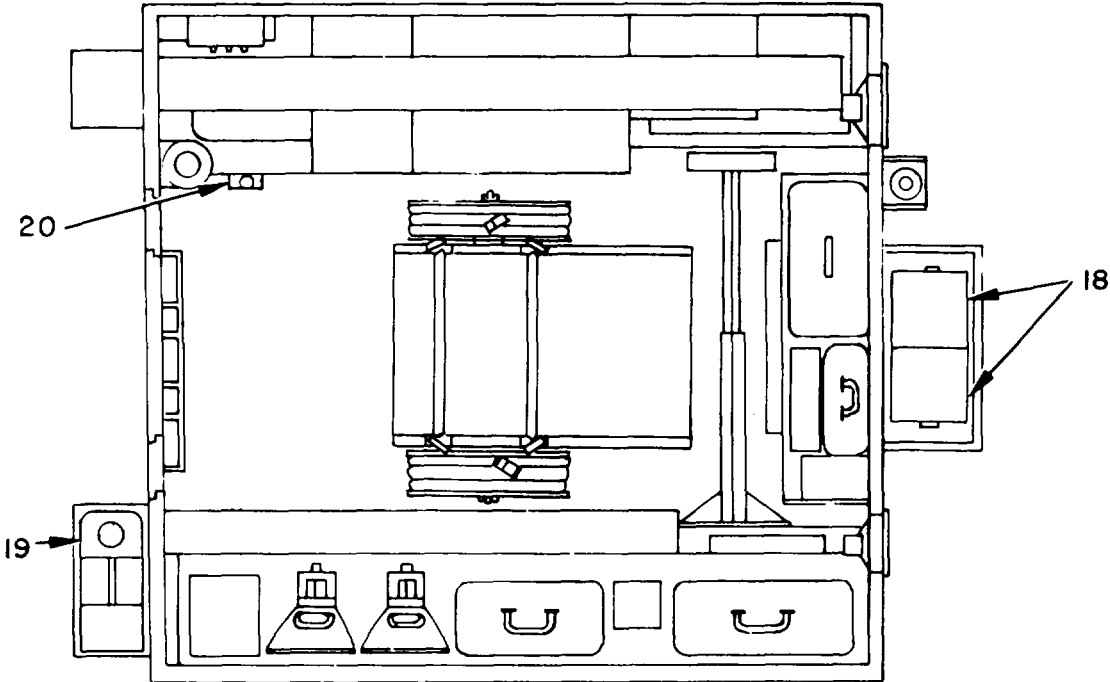
ELOKR007

Figure 3. Shelter S-318/G (MOD) (Sheet 1 of 3).



ELOKR008

Figure 3. Shelter S-318/G (MOD) (Sheet 2 of 3).



ELOKR009

Figure 3. Shelter S-318IG (MOD) (Sheet 3 of 3).

SECTION II

TM11-5895-692-24P

(1) ILLUSTRATION		(2)	(3)	(4)	(5)	(6) DESCRIPTION	(7)	(8)
(a) FIG NO.	(b) ITEM NO.	SMR CODE	NATIONAL STOCK NUMBER	PART NUMBER	FSCM	USABLE ON CODE	U/M	QTY INC IN UNIT
						GROUP 03 SHELTER S-318/G(MOD)		
3	1	PAOZZ	6240-00-044-6914	1413	24455	LAMP, INCANDESCENT.....	EA	2
3	2	PAFZZ	6230-00-879-3622	5326DE	07023	FLOODLIGHT.....	EA	2
3	3	XDFZZ		MILC10436	81349	COMPASS, MAGNETIC.....	EA	1
3	4	AFZZ	5930-00-933-7883	28-001	16921	SWITCH, TOGGLE	EA	1
3	5	PAFZZ	5930-00-879-4066	7Z49508	81073	HOUSING, SWITCH.....	EA	1
3	6	PAFZZ	5975-00-879-3613	3005	79409	BOX, JUNCTION.....	EA	1
3	7	XDFZZ		QON403F	81487	DISTRIBUTION BOX.....	EA	1
3	8	XDFZZ		NFT138	09023	CAPACITOR. FEEDTHRU	EA	2
3	9	PAFZZ	635000-921-6889	115	19557	BUZZER, ELECTRIC.....	EA	1
3	10	PAFZZ	5950-00-942-8457	320N	94227	TRANSFORMER, STEP.....	EA	1
3	11	PAFZZ	5940-00-983-6082	601C3-4ST4	75382	TERMINAL BOARD.....	EA	1
3	12	PAFZZ	5925-00-818-4811	QO-115	81487	CIRCUIT BREAKER.....	EA	3
3	13	PAFZZ	5940-00-557-1627	MS25036-53	96906	TERMINAL	EA	2
3	14	PAFZZ	6230-00-264-8261	MX991U	80058	FLASHLIGHT. PLASTIC.....	EA	1
3	15	PAOZZ	6240-00-143-3094	100ARS	08108	LAMP, INCANDESCENT.....	EA	2
3	16	PAFZZ	3940-00-879-5772	3159Z3	39428	BLOCKPULLEY.....	EA	1
3	17	PAOZZ	4020-00-968-1356	3827T3-8	39428	ROPE	FT	40
3	18	XDFZZ		SCC622065	80063	LOUDSPEAKER.....	EA	2
3	19	PAFZZ	7240-00-222-3088	5208	81902	DRUM, FUEL, 5 GALLON	EA	4
3	20	PAFZZ	5120-00-251-4489	GGGH0086	81348	HAMMER. SLEDGE	EA	1
3	21	PAOZZ	6240-00-152-2992	F15T8D	08108	LAMP, FLUORESCENT	EA	3
3	22	PAFZZ	4140-00-879-4621	76387	82877	FAN, EXHAUST.....	EA	2
3	23	PAFZZ	5930-00-827-0034	N01201	74545	SWITCH, TOGGLE	EA	5
3	24	PAOZZ	5975-00-224-5260	NXL48G	80063	ROD, GROUD	EA	1
3	29	PAOZZ	6250-00-194-794	FS2	88204	STARTER. FLUORESCENT	EA	3

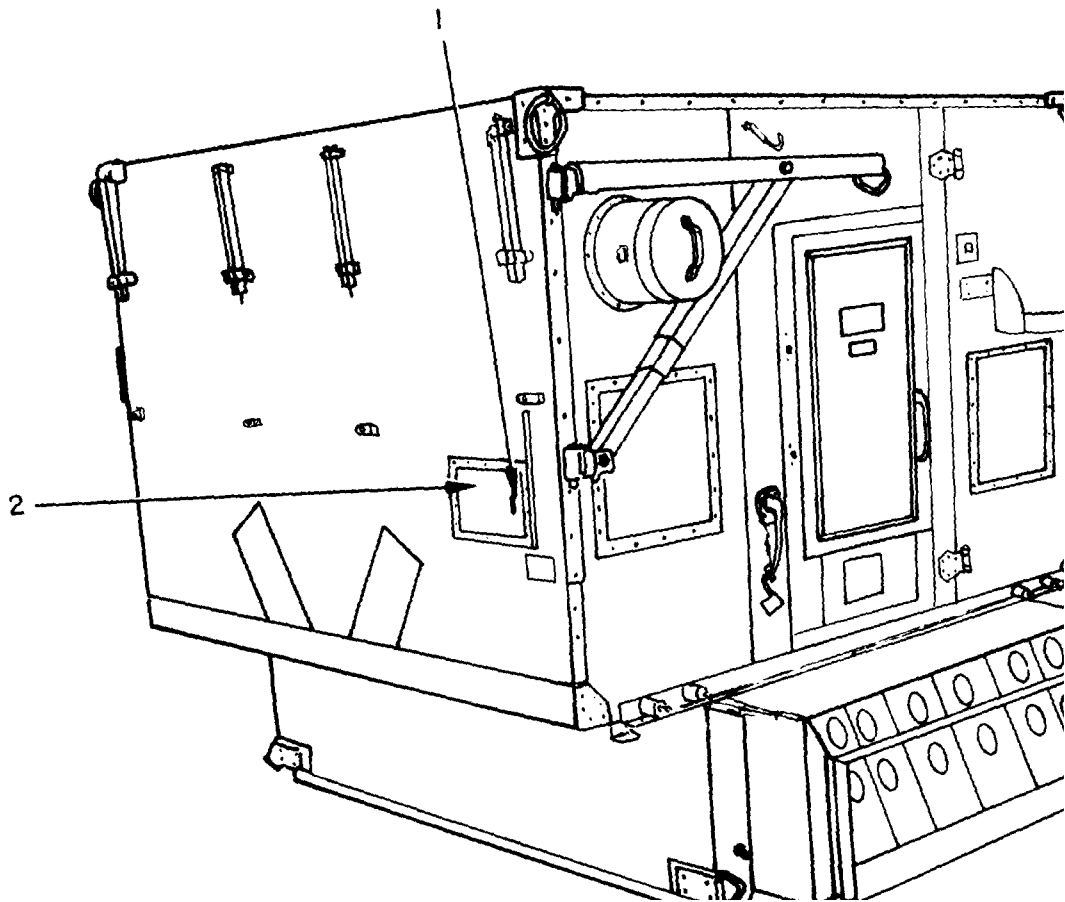
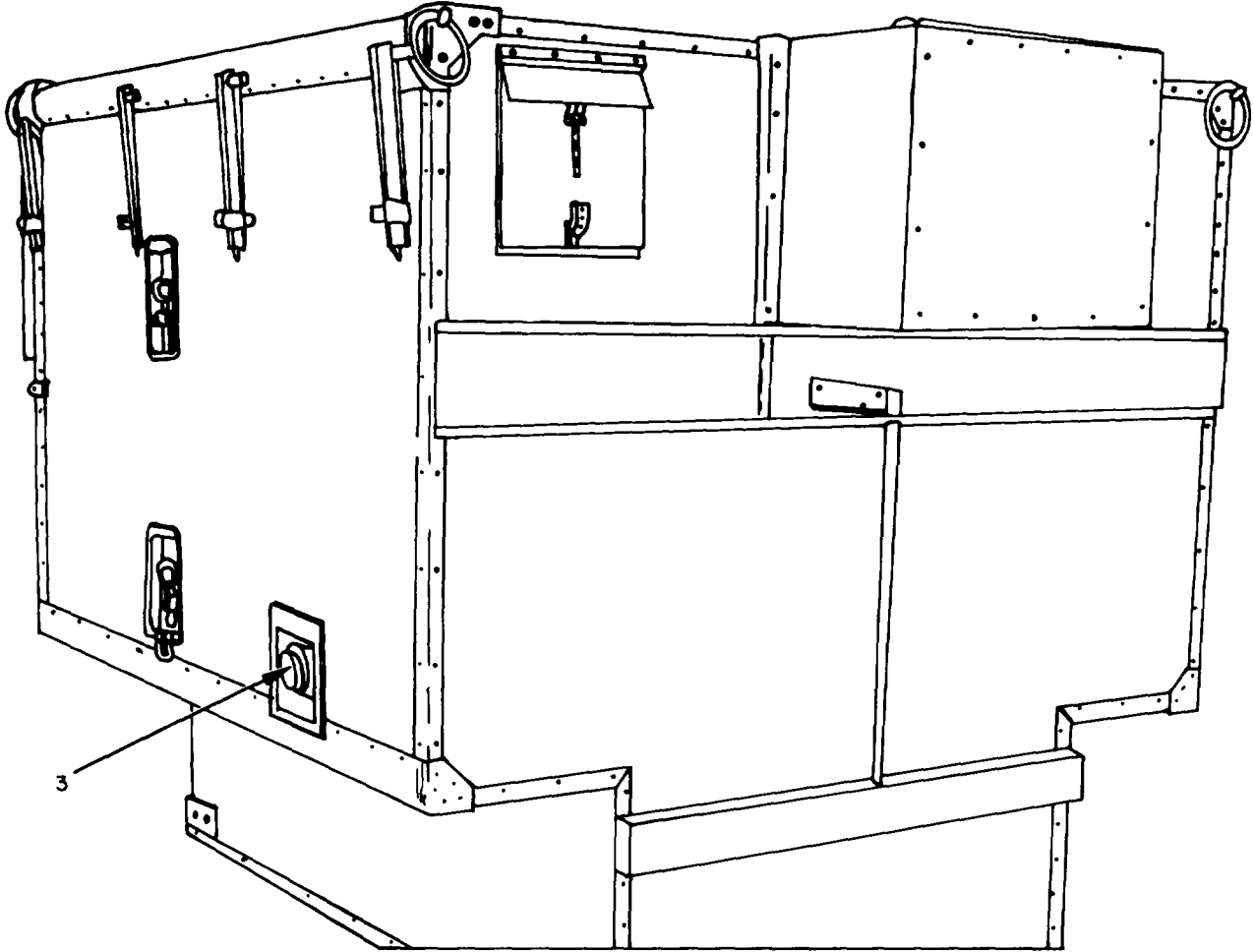


Figure 4. Shelter, Electrical Equipment, Front Door View
(Sheet 1 of 1).



F1 OKR011

Figure 4. Shelter, Electrical Equipment, Front Door View
(Sheet 2 of 2).

SECTION II

TM11-5895-692-24P

(1) ILLUSTRATION		(2)	(3)	(4)	(5)	(6) DESCRIPTION	(7)	(8)
(a) FIG NO.	(b) ITEM NO.	SMR CODE	NATIONAL STOCK NUMBER	PART NUMBER	FSCM	USABLE ON CODE	U/M	QTY INC IN UNIT
4	1	PAFZZ	5935-00-781-3331	1447	79409	CAP, ELECTRICAL	EA	1
4	2	PAFZZ	9751-00-947-3068	M3780FS	21873	COVER, RECEPTACLE	EA	1
4	3	PAFZZ	935-00-878-9477	5208	74545	CAP, ELECTRICAL	EA	2

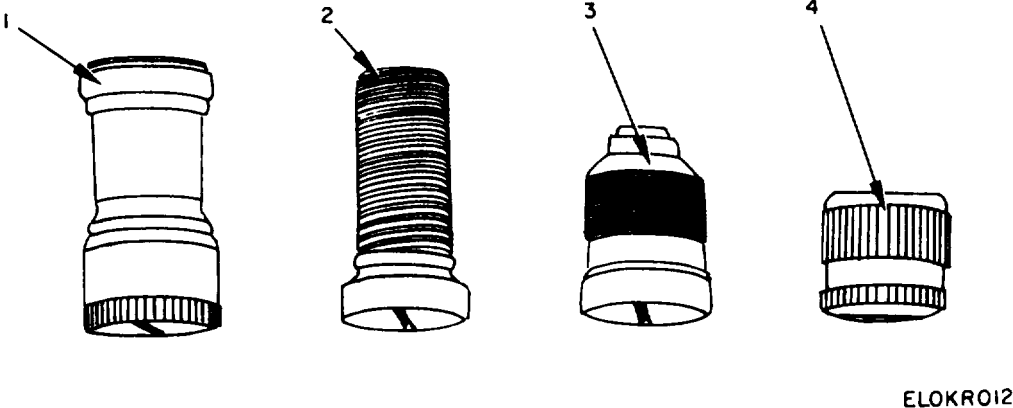
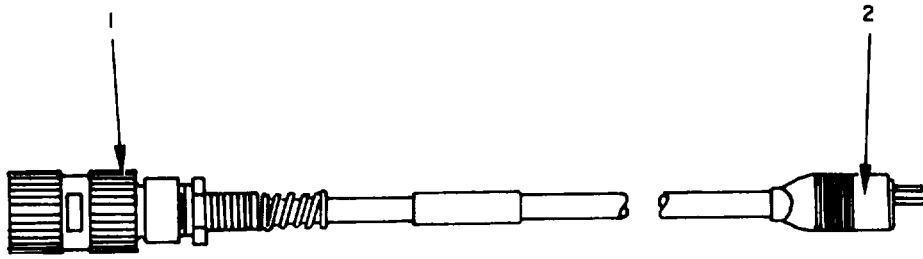


Figure 5. Shelter Modification Kit.

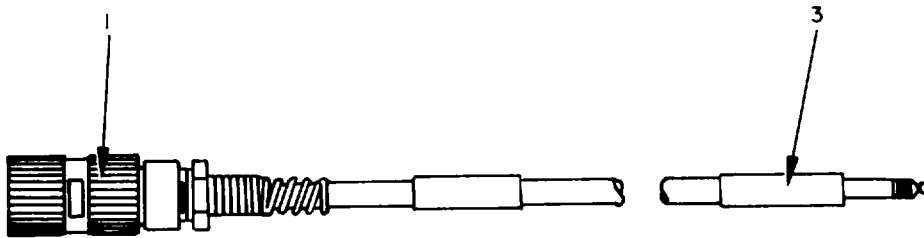
SECTION II

TM11-5895-692-24P

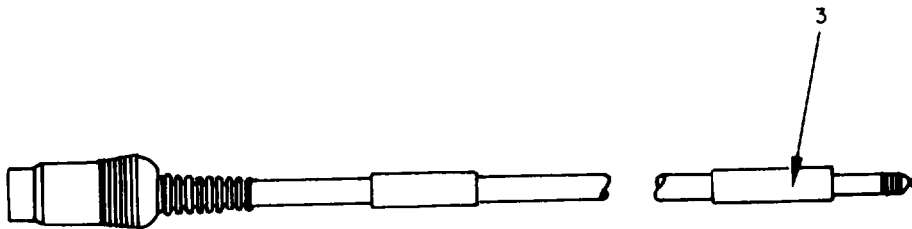
(1) ILLUSTRATION		(2)	(3)	(4)	(5)	(6) DESCRIPTION	(7)	(8)
(a) FIG NO.	(b) ITEM NO.	SMR CODE	NATIONAL STOCK NUMBER	PART NUMBER	FSCM	USABLE ON CODE	U/M	QTY INC IN UNIT
5	1	XDOZZ		020343	050	LENS, PROJECTIO.....	EA	1
5	2	PAOZZ	6760-878-4639	020251	93319	LENS, PROJECTION.....	EA	1
5	3	PAOZZ	6760-00-878-8051	020409	06650	LENS, PROJECTION.....	EA	1
5	4	PAOZZ	6760-00-878-0590	VST6043	82394	LENS, PROJECTION.....	EA	1
					17			



CABLE ASSEMBLY, TAPE RECORDER TO P.A.



CABLE ASSEMBLY, RADIO TO P.A.



CABLE ASSEMBLY, RADIO TO TAPE RECORDER

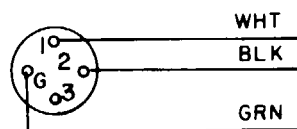
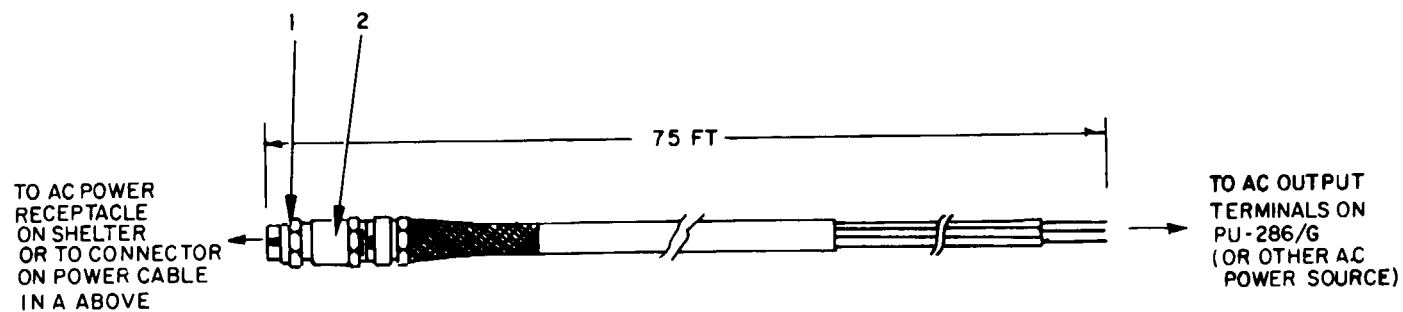
ELOKRO13

Figure 6. Tape Recorder/P.A. and Radio/Tape Recorder Interconnector Cables.

SECTION II

TM11-5895-692-24P

(1) ILLUSTRATION		(2)	(3)	(4)	(5)	(6) DESCRIPTION	(7)	(8)
(a) FIG NO.	(b) ITEM NO.	SMR CODE	NATIONAL STOCK NUMBER	PART NUMBER	FSCM	USABLE ON CODE	U/M	QTY INC IN UNIT
6	1	PAFZZ	5935-00-647-1354	5269	74545	CONNECTO	EA	2
6	2	PAFZZ	5935-00-283-1230	PJO55R	95309	CONNECTOR, PLU.....	EA	1
6	3	PAFZZ	5935-00-192-4760	PJO55B	70674	PLUG, TELEPHONE	EA	2



CABLE ASSEMBLY, POWER
(TO GENERATOR)

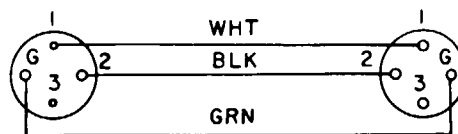
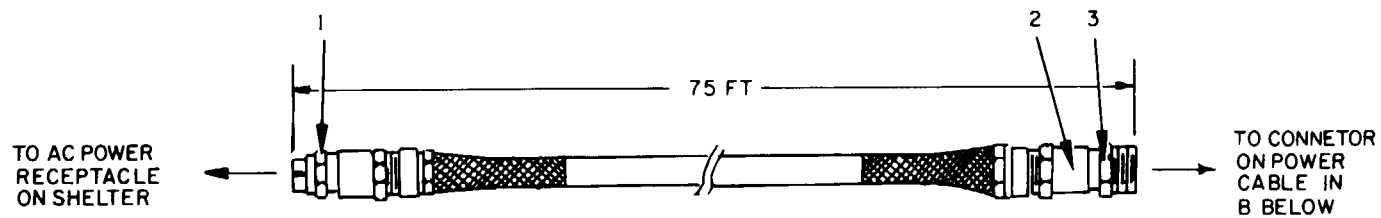
ELOKRO14

Figure 7. Cable Assembly (SC-C-622029).

SECTION II

TM11-5895-692-24P

(1) ILLUSTRATION		(2)	(3)	(4)	(5)	(6)	(7)	(8)
(a) FIG NO.	(b) ITEM NO.	SMR CODE	NATIONAL STOCK NUMBER	PART NUMBER	FSCM	DESCRIPTION USABLE ON CODE	U/M	QTY INC IN UNIT
7	1	XDFZZ		ZZMNB1516-23S	49367	GROUP 19 CAB E ASSEMBLY (SC-C-22029)	FT	1
7	2	XDFZZ		ZZMW2016-165-0	49367	CONNECTOR, PLU..... CONNECTOR, ADAPTER.....	FT	1



CABLE ASSEMBLY, POWER
(TO SHELTER)

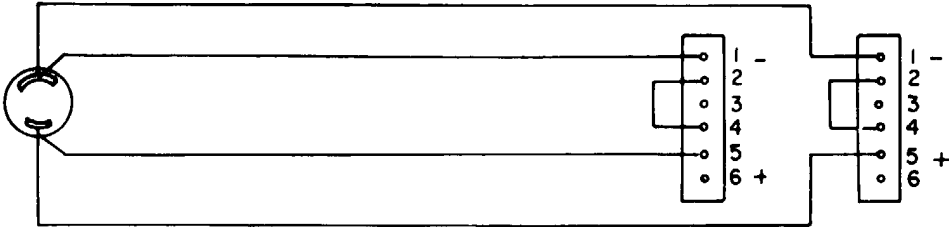
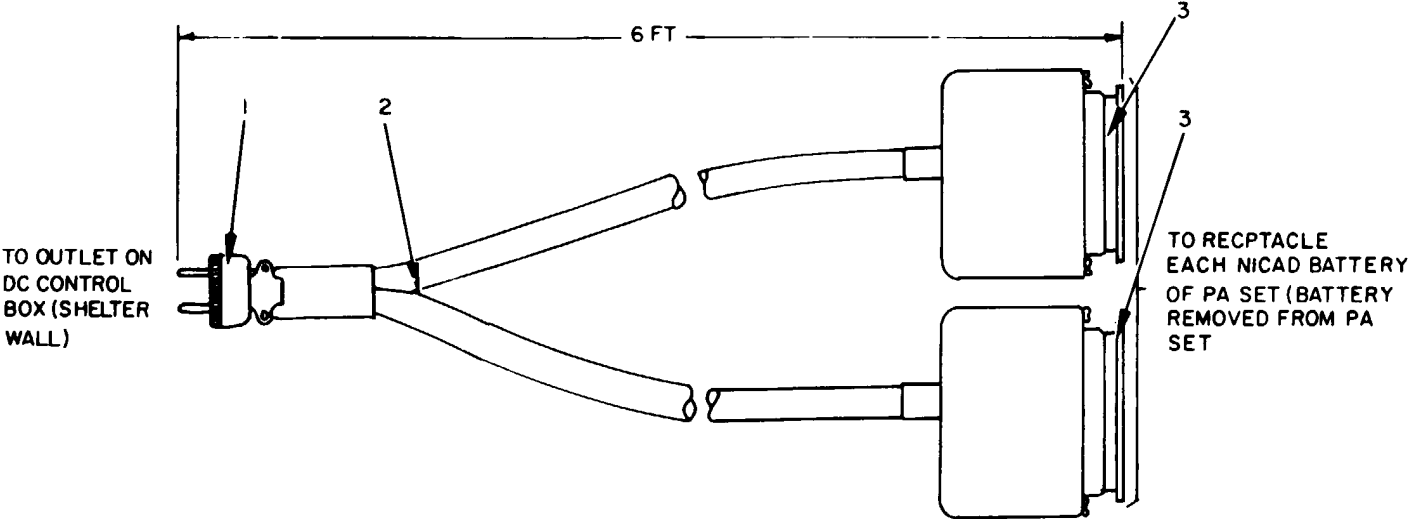
ELOKRO15

Figure 8. Cable Assembly (SC-C-622028)

SECTION II

TM11-5895-692-24P

(1) ILLUSTRATION		(2)	(3)	(4)	(5)	(6) DESCRIPTION	(7)	(8)
(a) FIG NO.	(b) ITEM NO.	SMR CODE	NATIONAL STOCK NUMBER	PART NUMBER	FSCM	USABLE ON CODE	U/M	QTY INC IN UNIT
						GROUP 20 CABLE ASSEMBLY (SC-C-622028)		
8	1	XDFZZ		ZZMNB1516--23S	49367	CONNECTOR, PLU.....	EA	1
8	2	XDFZZ		ZZMW2016-165-0	49367	CONNECOR, ADAPTER.....	EA	2
8	3	PAFZZ	5935-00-817-6546	ZZMW2116	49367	CONNECTOR.....	EA	1



CABLE ASSEMBLY BATTERY POWER

Figure 9. Cable Assembly (SC-C-622026).

ELOKRO16

SECTION II

TM 11-5985-692-24P

(1) ILLUSTRATION		(2)	(3)	(4)	(5)	(6)	(7)	(8)
(a) FIG NO.	(b) ITEM NO.	SMR CODE	NATIONAL STOCK NUMBER	PART NUMBER	FSCM	DESCRIPTION USABLE ON CODE	U/M	QTY INC IN UNIT
						GROUP 21 CABLE ASSEMBLY (SC-C-62026)		
9	1	XDFZZ		7465	74545	CONNECTOR, PLUG.....	EA	1
9	2	PAFZZ	6145-00-866-2302	8431	70903	CABLE, SPECIAL	FT	6
9	3	XDFZZ		XL3J3	71468	CONNECTOR, PLUG.....	EA	2

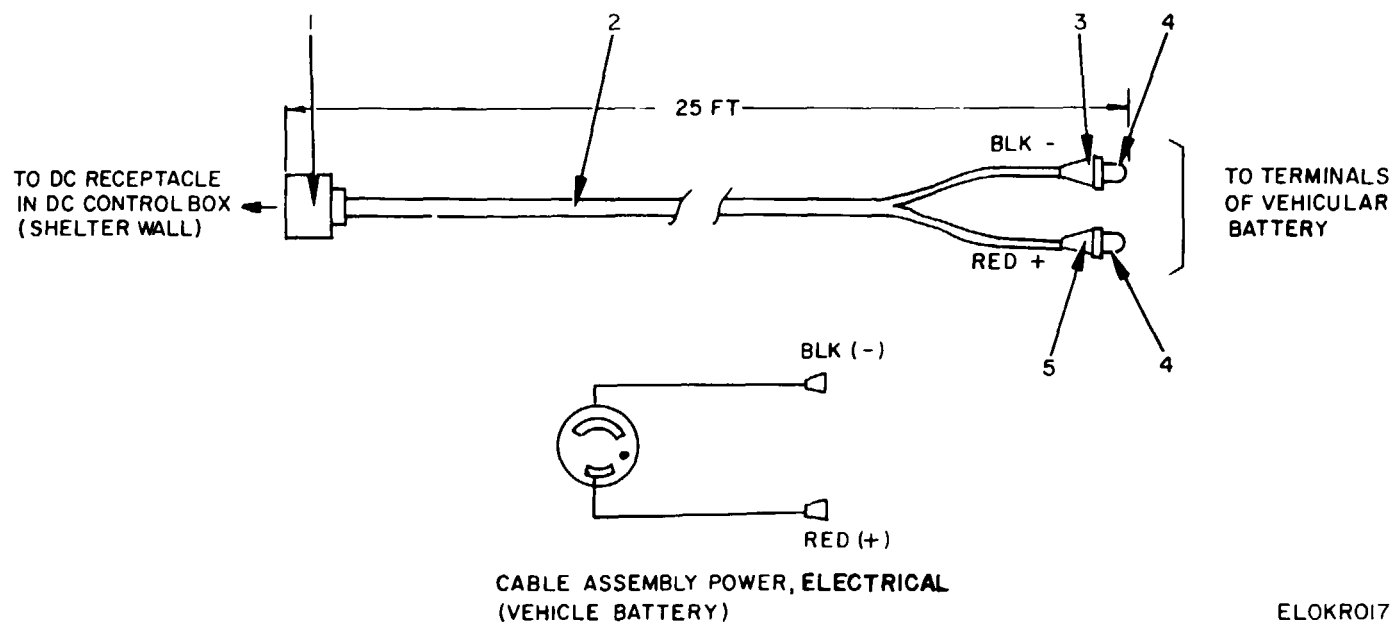


Figure 10. Cable Assembly (SC-C-622025).

SECTION II

TM-11-5985-692-24P

(1) ILLUSTRATION		(2)	(3)	(4)	(5)	(6)	(7)	(8)
(a) FIG NO.	(b) ITEM NO.	SMR CODE	NATIONAL STOCK NUMBER	PART NUMBER	FSCM	DESCRIPTION USABLE ON CODE	U/M	QTY INC IN UNIT
						GROUP 22 CABLE ASSEMBLY (SC-C22025)		
10	1	PAFZZ	5935-00-149-3628	7464	74545	CONNECTOR.....	EA	1
10	2	PAFZZ	6145-00-889-1453	C002MGF2-12-0500	81349	CABLE.....	FT	23
10	3	PAFZZ	5975-00-988-0649	26BLACK	76545	INSULATOR, BOOT	EA	1
10	4	PAFZZ	5999-00-204-9367	24	76545	CLIP, BATTERY	EA	2
10	5	XDFZZ		26RED	76545	INSULATOR, BOOT	EA	1

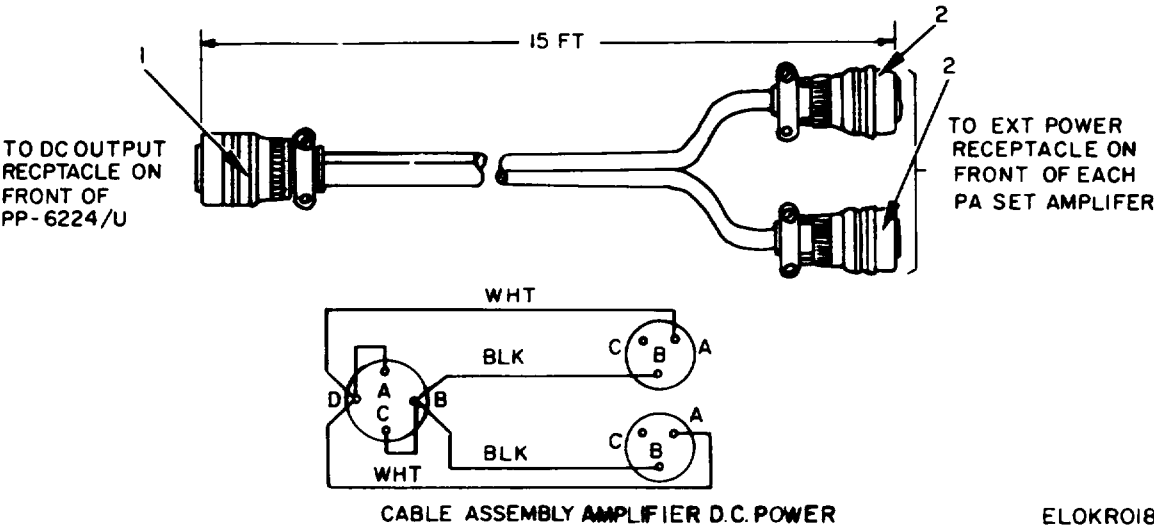


Figure 11. Cable Assembly (SC-C-622031).

(1) ILLUSTRATION		(2)	(3)	(4)	(5)	(6)	(7)	(8)
(a) FIG NO.	(b) ITEM NO.	SMR CODE	NATIONAL STOCK NUMBER	PART NUMBER	FSCM	DESCRIPTION USABLE ON CODE	U/M	QTY INC IN UNIT
11	1	PAFZZ	5935-00-257-9016	91MX4M	02660	GROUP 23 CABLE ASSEMBLY (SC-C-622031)		
11	2	PAFZZ	5935-00-222-0812	91MC3M	02660	CONNECTOR, PLUG.....	EA	1
						CONNECTOR, PLU.....	EA	2

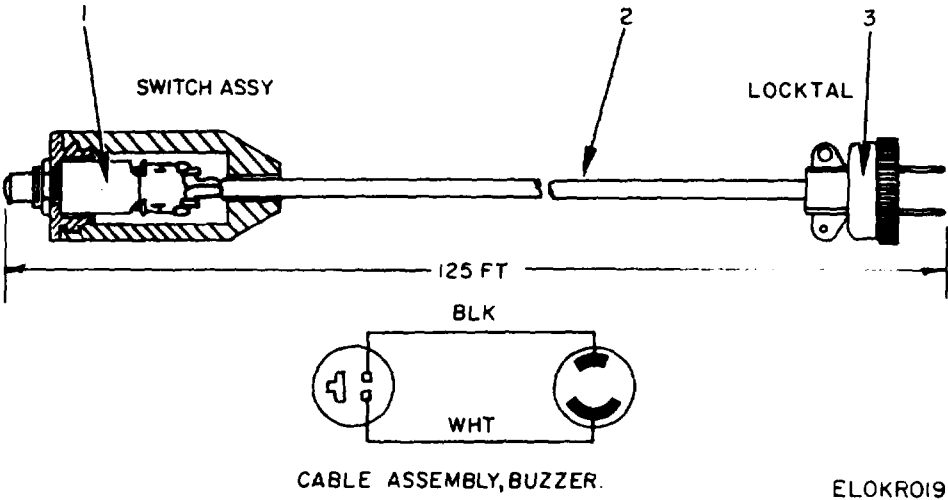
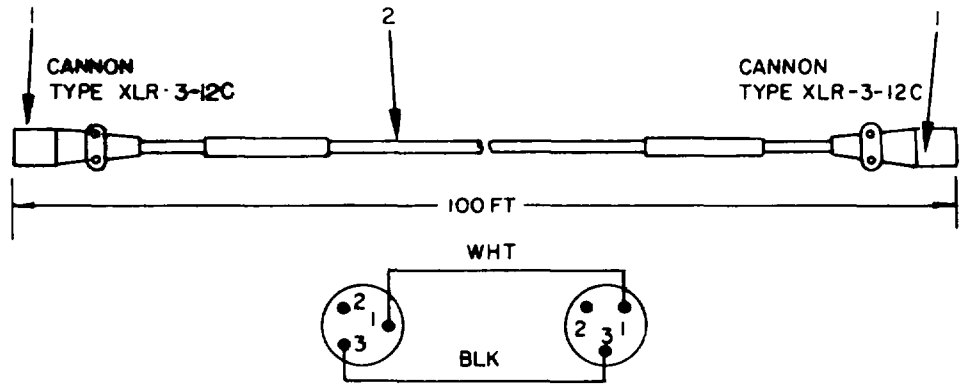


Figure 12. Cable Assembly, Special Purpose (SC-C-622024).

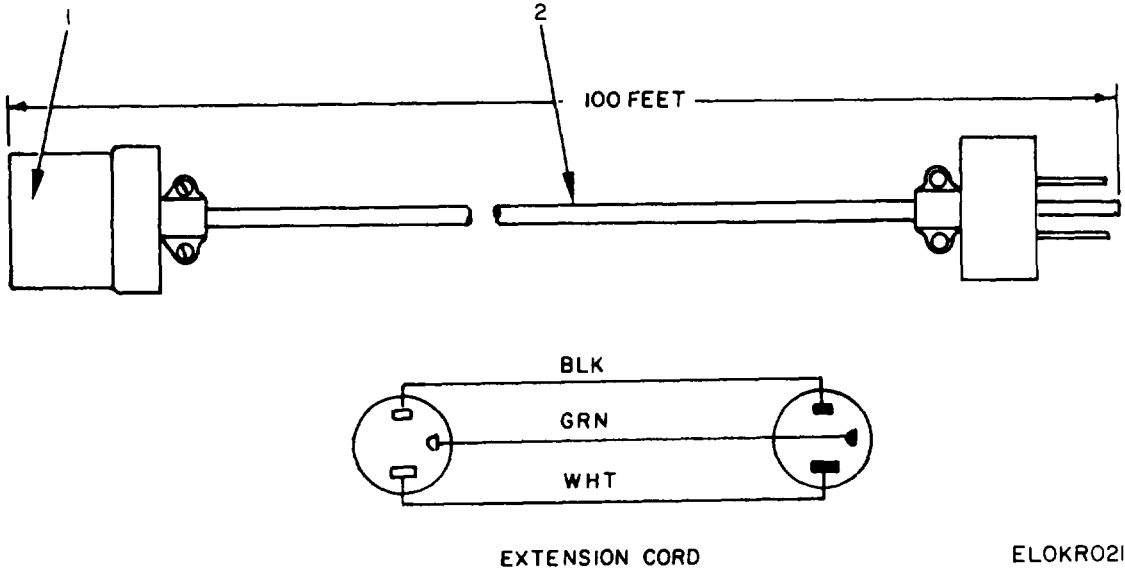
(1) ILLUSTRATION		(2)	(3)	(4)	(5)	(6)	(7)	(8)
(a) FIG NO.	(b) ITEM NO.	SMR CODE	NATIONAL STOCK NUMBER	PART NUMBER	FSCM	DESCRIPTION USABLE ON CODE	U/M	QTY INC IN UNIT
12	1	PAFZZ	5930-00-878-8739	8411K13	15605	GROUP 24 CABLE ASSEMBLY SPECIAL PURPOSE SC-C-622024 1		
12	2	PAFZZ	614-00-845-5206	8762	70903	SWITCH, PUSH-BUTTON.....	EA	1
12	3	XDFZZ		ZZMWB1016-23	49367	CABLE, SPECIAL..... CONNECTOR, PLU.....	FT EA	125 1



CABLE ASSEMBLY, MOVIE PROJECTOR LOUDSPEAKER. ELOKRO20

Figure 13. Cable Assembly, Special Purpose (SC-C-622030).

(1) ILLUSTRATION		(2)	(3)	(4)	(5)	(6)	(7)	(8)
(a) FIG NO.	(b) ITEM NO.	SMR CODE	NATIONAL STOCK NUMBER	PART NUMBER	FSCM	DESCRIPTION USABLE ON CODE	U/M	QTY INC IN UNIT
13	1	PAFZZ	5935-00-805-4836	XLR3-12C	71468	GROUP 25 CAKE ASSEMBLY SIECIAL PURPUSE (SCC-622030)		
13	2	PAFZZ	6145-00-565-5916	C002NGE-16-0342	81349	CONNECOTR, PLU..... CABLE, SPECIAL.....	EA FT	2 26



ELOKR02I

Figure 14. Extension Cord (SC-C-622027).

(1) ILLUSTRATION		(2)	(3)	(4)	(5)	(6)	(7)	(8)
(a) FIG NO.	(b) ITEM NO.	SMR CODE	NATIONAL STOCK NUMBER	PART NUMBER	FSCM	DESCRIPTION USABLE ON CODE	U/M	QTY INC IN UNIT
14	1	PAFZZ	5935-00-061-2042	9768	74545	GROUP 26 EXTENSION CORD (SC-C-220271 CONNECTOR..... CABLE, SPECIAL.....	EA	1
14	2	XDFZZ		C003MGC-16-0360	81349			

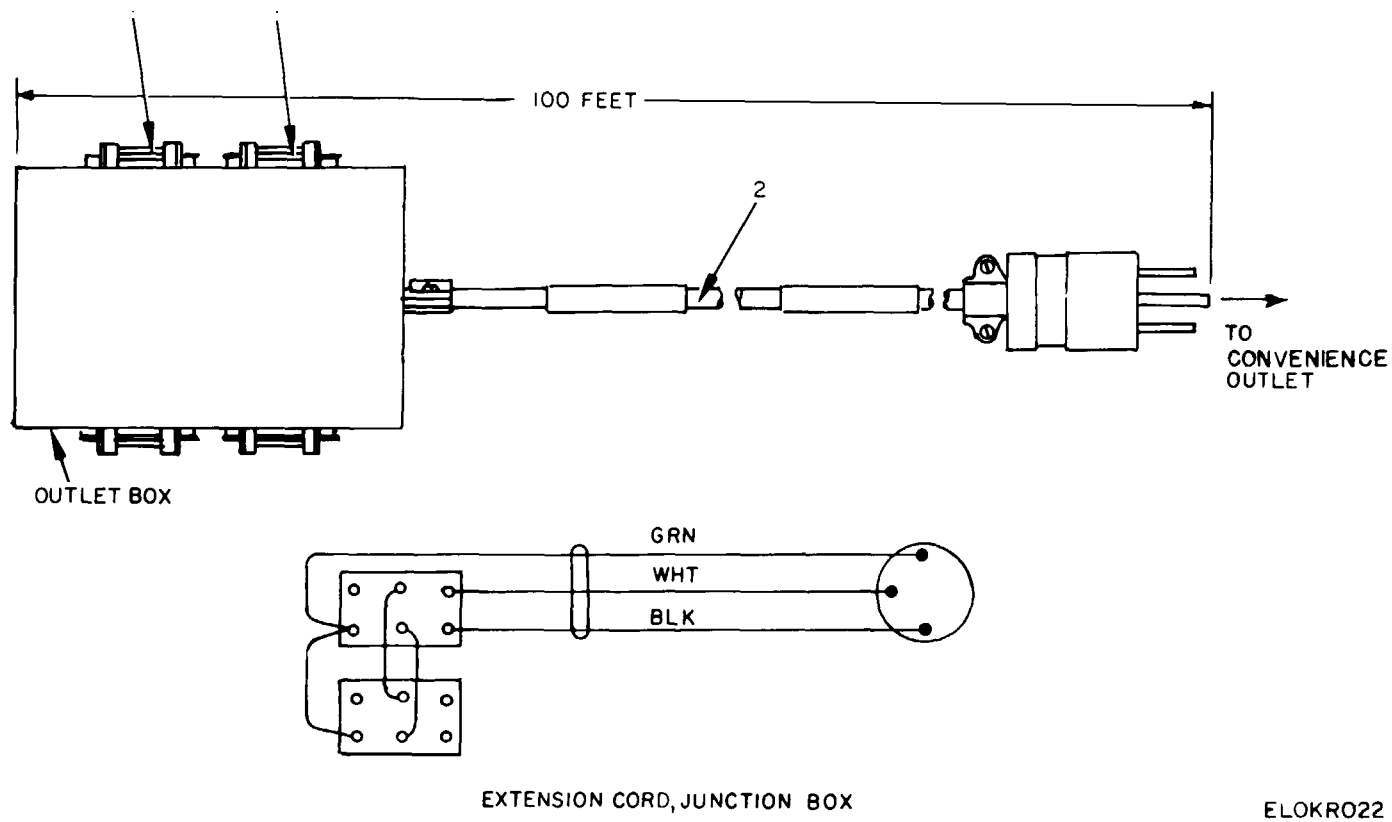


Figure 15. Extension Cord (SC-C-622032).

SECTION II

TM 11-5985-692-24P

(1) ILLUSTRATION		(2)	(3)	(4)	(5)	(6)	(7)	(8)
(a) FIG NO.	(b) ITEM NO.	SMR CODE	NATIONAL STOCK NUMBER	PART NUMBER	FSCM	DESCRIPTION USABLE ON CODE	U/M	QTY INC IN UNIT
15	1	PAFZZ	5935-00-283-4003	5262	74545	GROUP 27 EXTENSION CORD (SC-C-622032) CONNECTO	EA	7
15	2	XDFZZ		S158271				24457

CROSS- REFERENCE-INDEXES
NATIONAL STOCK NUMBER INDEX

NOTE: LATEST NATIONAL STOCK NUMBER AND PART NUMBER ASSIGNMENTS ARE INCLUDED AT END OF INDEX

STOCK NUMBER	FIG.	ITEM	STOCK NUMBER	FIG.	ITEM
5920-00-010-6652	2	1	5930-00-827-0034	3	23
6240-00-044-6914	3	1	6140-00-832-5731	1	10
5935-00-061-2042	14	1	6145-00-845-5206	12	2
5835-00-082-3842	1	15	6145-00-866-2302	9	2
5830-00-082-4126	1	9	6760-00-878-0590	5	4
			6760-00-878-4639	5	2
5935-00-149-3628	10	1	6760-00-878-8051	5	3
6240-00-152-2992	3	21	5930-00-878-8739	12	1
5935-00-192-4760	6	3	5935-00-878-9477	4	3
6250-00-194-4794	3	25	5975-00-879-3613	3	6
5959-00-204-9367	10	4	6230-00-879-3622	3	2
5935-00-222-0812	11	2	5995-00-879-3724	1	21
7240-00-222-3088	3	19	5995-00-879-3738	1	22
5975-00-224-5260	3	24	5995-00-879-3751	1	26
5120-00-251-4489	3	20	5995-00-879-3752	1	24
7430-00-254-4319	1	16	5995-00-879-3753	1	23
5935-00-257-9016	11	1	5995-00-879-3762	1	28
6230-00-264-6261	3	14	5930-00-879-4066	3	5
4210-00-270-4512	1	19	4140-00-879-4621	3	22
5935-00-283-1230	6	2	3940-00-879-5772	3	16
5935-00-283-4003	15	1	6150-00-879-6430	1	29
7730-00-503-1403	1	11	6145-00-889-1453	10	2
			6730-00-889-3393	1	17
2320-00-542-4636	1	4	6350-00-921-6889	3	9
5805-00-543-0012	1	13	6730-00-933-4871	1	14
5940-00-557-1627	3	13	6625-00-933-7762	2	11
6145-00-565-5916	13	2	6625-00-933-7763	2	3
6730-00-577-4813	1	5	5950-00-933-7880	2	10
5910-00-581-2569	2	5	5950-00-933-7881	2	6
5935-00-647-3546	6	1	5930-00-933-7883	3	4
5410-00-763-2339	1	1	5910-00-933-7970	2	9
5935-00-781-3331	4	1	6720-00-935-3818	1	12
5920-00-792-3830	2	2	5950-00-942-8457	3	10
5935-00-805-4836	13	1	0575-00-947-3068	4	2
5935-00-817-6546	8	3	4020-00-968-1356	3	17
5925-00-818-4811	3	12	5940-00-983-6082	3	11
5975-00-988-0649	10	3			

PART NUMBER	FSCM	FIG. NO.	ITEM NO.	PART NUMBER	FSCM	FIG. NO.	ITEM NO.
ANUNH10	80058	1	15	SCC622065	80063	3	18
ANU1H5	80058	1	9	S158271	24457	15	2
AP9-1	80058	1	6	S318G	80058	1	1
BM10A	96906	1	5	TA312PT	80058	1	13
8M22A	06400	1	14	UH48	80058	1	20
C0-03MGC3-16-0360	81349	14	2	XLR3-12C	71468	13	1
C0002MGE2-16-0342	81349	13	2	XLR3J3	71468	9	3
C002MGF2-12-0500	81349	10	2	ZZMNB1S16-23S	49367	7	1
DS21-1-2QUART, ABCM11	80058	1	7	ZZMN81516-23S	49367	8	1
FS2	88204	3	25	ZZMW81016-23	49367	12	3
F15T8D	08108	3	21	ZZLMW2016-165-0	49367	7	2
GGGH0086	81348	3	20	ZZMW2016-165--0	49367	8	2
KGNT3010	09023	2	8	ZZMW2116	49367	8	3
MEP-016A	30554	1	2	02-002	81692	2	10
MILC10436	81349	3	3	020251	93319	5	2
MILS43483	81349	1	18	020343	06650	5	1
MILTYPE1CL1FF5	81349	1	19	020409	06650	5	3
MODELEF	81692	1	8	05-024	81692	2	6
MS25036-53	96506	3	13	067504	06650	1	17
MX148G	d0063	3	24	100ARS	U8108	3	15
MX991U	d0058	3	14	10007	81692	2	4
M3781	80058	1	4	115	19557	3	9
M3780FS	21873	4	2	1447	79409	4	1
NFT138	09023	3	8	16-001	81692	1	29
N01201	74545	3	23	1683	24455	3	1
PJ055B	70674	6	3	20-007	81692	2	9
PJ055R	95309	6	2	24	76545	10	4
Q0-115	81487	3	12	24-001	81692	2	3
Q0N403F	81487	3	7	25-001	81692	2	11
R520URR	80058	1	11	2522A	47904	1	12
SCC622024	80063	1	26	268LACK	76545	10	3
SCC622025	80063	1	24	26RED	76545	10	5
SCC622026	80063	1	23	26480	55933	1	10
SCC622027	80063	1	28	28-001	81692	3	4
SCC622028	80063	1	22	3AMP3AG	75915	2	1
SCC622029	80063	1	21	3005	79409	3	6
SCC622030	80063	1	21	31101	75915	Z	12
SCC622031	80063	1	25	3159Z3	39428	3	16

SECTION IV. NATIONAL STOCK NUMBER AND PART NUMBER INDEX

PART NUMBER	FSCM	FIG. NO.	ITEM NO.	PART NUMBER	FSCM	FIG. NO.	ITEM NO.
320N	94227	3	10	601C3-4ST4	75382	3	11
342001	759L5	2	2				
3827T3-8	39428	3	17	7Z4950B	81073	3	5
4A032-1	97403	1	3	7464	74545	10	1
47P8	055711	2	5	7465	74545	9	1
5	50456	1	16	76387	82877	3	22
51-002	81692	2	7	8411K13	15605	12	1
5208	74545	4	3	8451	70903	9	2
5208	81902	3	19	8762	70903	12	2
5262	74545	15	1	91NC3M	02660	11	2
5269	74545	6	1	91MC4M	02660	11	1
5326DE	07023	3	2	9768	74545	14	1

LATEST NATIONAL STOCK NUMBER ASSIGNMENTS

STOCK NUMBER	FIG NO	ITEM NO
611500-017-8237	1	2
6240-00-143-3094	3	15
7520-00-761-2151	1	18
2805-00-776-0483	1	3

LATEST PART NUMBER ASSIGNMENTS

PART NUMBER	FSCM	FIG NO	ITEM NO
VST6043	82394	5	4

By Order of the Secretary of the Army:

Official:


BERNARD W. ROGERS
General, United States Army
Chief of Staff

J. C. PENNINGTON
Brigadier General, United States Army
The Adjutant General

Distribution:

To be distributed in accordance with DA Form 12-51, Organizational TMP literature requirements for AN/MSQ85.

RECOMMENDED CHANGES TO EQUIPMENT TECHNICAL PUBLICATIONS

 <p style="font-size: small; margin: 0;">THEN... JOT DOWN THE DOPE ABOUT IT ON THIS FORM, CAREFULLY TEAR IT OUT, FOLD IT AND DROP IT IN THE MAIL!</p>		SOMETHING WRONG WITH THIS PUBLICATION?	
		FROM: (PRINT YOUR UNIT'S COMPLETE ADDRESS)	
		DATE SENT	
PUBLICATION NUMBER		PUBLICATION DATE	PUBLICATION TITLE
BE EXACT... PIN-POINT WHERE IT IS			
PAGE NO.	PARA-GRAPH	FIGURE NO.	TABLE NO.
IN THIS SPACE TELL WHAT IS WRONG AND WHAT SHOULD BE DONE ABOUT IT:			
PRINTED NAME, GRADE OR TITLE, AND TELEPHONE NUMBER		SIGN HERE:	

TEAR ALONG PERFORATED LINE

DA FORM 2028-2
1 JUL 79

PREVIOUS EDITIONS ARE OBSOLETE.

P.S.—IF YOUR OUTFIT WANTS TO KNOW ABOUT YOUR RECOMMENDATION MAKE A CARBON COPY OF THIS AND GIVE IT TO YOUR HEADQUARTERS.

